

SYSTEM

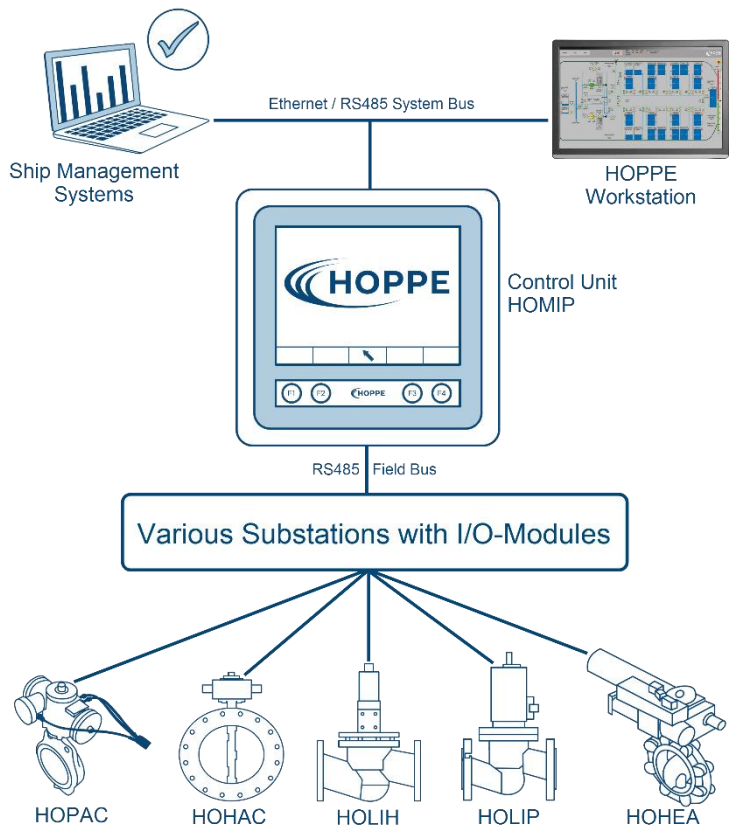
The Hoppe Valve Remote Control System is designed for remote control of pneumatic, hydraulic, electro-hydraulic or electrically operated valves as well as pumps used in ballast, bilge, fuel oil and liquid cargo systems.

The PLC unit HOMIP provides the signal hub between all process components and control workstations or other centralized ship management systems with Ethernet TCP/IP, serial RS485 and RS422 interfaces. The integrated 6" touch screen offers a structured interface for system configuration, parameter settings and full back-up operation. The system setup is designed for decentralized installations. Work stations are available for various operation locations and provide clear and structured visualisation of the numerous fluid systems, including piping, valves, pumps, switches, treatment units as well as tank contents.



FACTS & FEATURES

- Low costs due to high reliability, easy operation, low maintenance effort and low spare part costs
- Hybrid pneumatic cable type "HOCAB" as all-in-one solution with air tubes and signal cable – easy installation and time- and effort-reducing
- Robust and for the marine environment approved actuators, designed for vessel's lifetime
- Submerged versions available on demand, with no risk of faulty devices attached to the actuator
- Almost maintenance-free, easy connection with plug-type connectors
- Manual operation functions for emergency situations with hand pump connection
- User-friendly GUI on the control unit HOMIP plus PC-based software, connected with the VC-system and loading computers for support of ballast water operations and vessel's efficiency



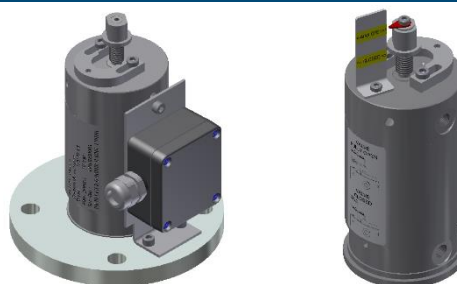
TECHNICAL DATA HOPAC (PNEUMATIC)

Working type	Double-acting, single-acting (3 types)
Working pressure	min. 7 bar / max. 12 bar, pneumatic
Air consumption	1.54 - 12.32 liter/stroke (at 7 bar)
Valve range	DN50 – DN350
Weight	4-15 kg (Aluminum)



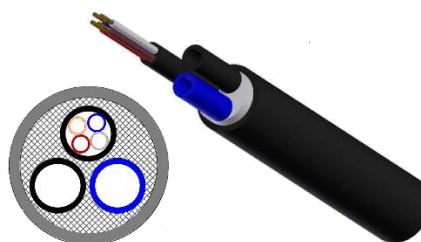
TECHNICAL DATA HOLIP (LINEAR PNEUMATIC)

Working type	Double-acting, single-acting (3 types)
Working air pressure	min. 7 bar / max. 10 bar, pneumatic
Valve range	DN15 – DN200
Weight	3-5 kg (Aluminum)



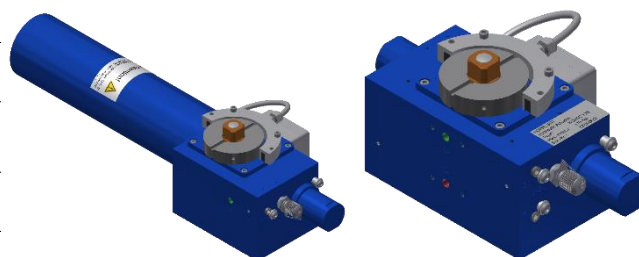
TECHNICAL DATA HOCAB (HYBRID CABLE)

Construction details	Hybrid cable with 2x PA-air pressure tubes and 1x conductor cable
PA-air pressure tube	2x special polyolefin flame-retardant, 6mm outer nom. Ø, 4mm inner nom. Ø
Conductor cable	LIHDH 4x 0.34mm ² fine copper wires, shielded, special polyolefin jacket
Operating pressure	max. 12 bar



TECHNICAL DATA HOHAC Y & HOHEA Y (HYDRAULIC / ELECTRO-HYDRAULIC)

Working type	Double-acting, single-acting (3 types)
Working locations	Dry, temporarily submerged
Working pressure	105 bar, oil hydraulic 180 bar, oil electro-hydraulic
Valve range	DN50 – DN600
Weight	4.5-16.5 kg (Aluminum)



TECHNICAL DATA HOLIH (LINEAR HYDRAULIC)

Working type	Double-acting, single-acting (3 types)
Working locations	Dry
Working pressure	180 bar, oil hydraulic
Valve range	DN15 – DN350
Weight	5.6-18 kg (Aluminum)

