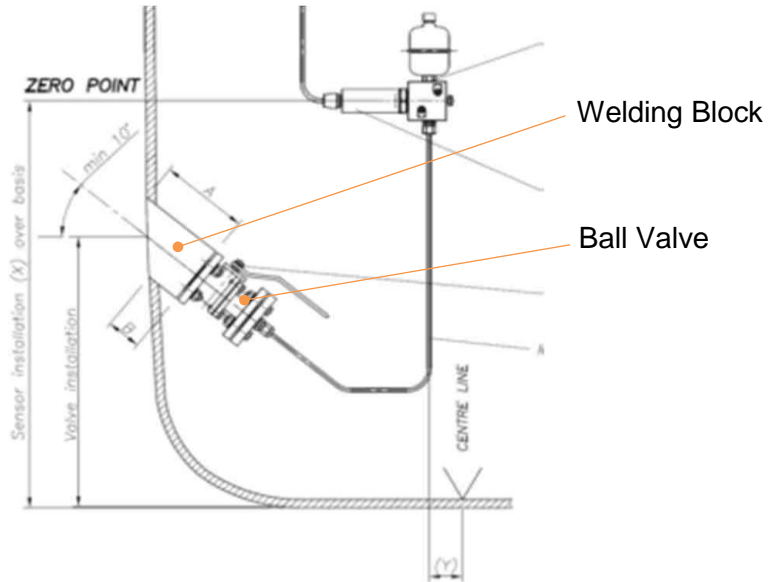


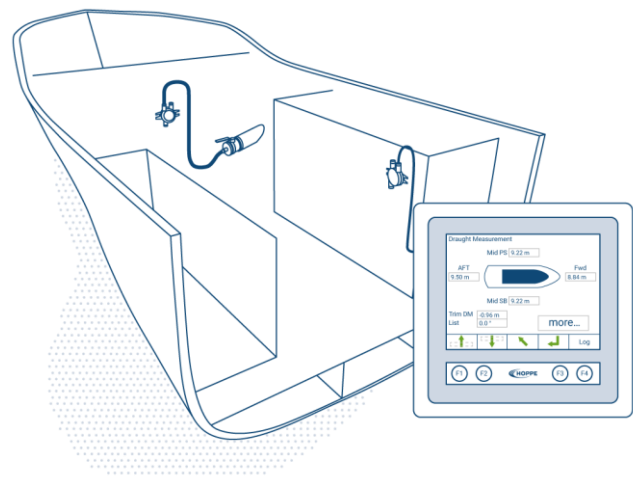
SYSTEM

The **Hoppe Draught Measuring** function is usually provided as a part of the tank content measuring system. Draught indication is sensitive, it depends on the determination of the correct sensor coordinates and is influenced by external factors such as ship hull accuracy and speed. Hoppe Marine has developed a smart solution for draught sensor installation: The safe and robust welding block / ball valve unit at the hull penetration allows a very cost efficient installation and service. It enables reliable measuring results during operation by minimizing unwanted effects as for example air trapping, sediments sticking as well as avoiding mechanical damages. Pressure type sensors as such are usable for static draught / at very low or zero speed.



FACTS & FEATURES

- Precise draught calculation at perpendicular and draught marks
- Trim and heel, sagging and hogging information
- Significant installation cost savings by smart welding block arrangements
- Reliable and accurate in house designed sensors
- Experience on more than 2,800 vessels worldwide
- Made in Germany with competitive market price
- Approved by major classification societies



TECHNICAL DATA NAME OF SYSTEM CORE COMPONENT IN WHITE

DATA CATEGORY DATA VALUE

ENTER TECHNICAL DATA IN BLACK

INSERT COMPONENT PHOTO

TECHNICAL DATA NAME OF SYSTEM CORE COMPONENT XYZ IN WHITE

DATA CATEGORY DATA VALUE

ENTER TECHNICAL DATA IN BLACK

INSERT COMPONENT PHOTO

TECHNICAL DATA NAME OF SYSTEM CORE COMPONENT XYZ IN WHITE

DATA CATEGORY DATA VALUE

ENTER TECHNICAL DATA IN BLACK

INSERT COMPONENT PHOTO

TECHNICAL DATA NAME OF SYSTEM CORE COMPONENT XYZ IN WHITE

DATA CATEGORY DATA VALUE

ENTER TECHNICAL DATA IN BLACK

INSERT COMPONENT PHOTO

TECHNICAL DATA NAME OF SYSTEM CORE COMPONENT XYZ IN WHITE

DATA CATEGORY DATA VALUE

ENTER TECHNICAL DATA IN BLACK

INSERT COMPONENT PHOTO